

2007

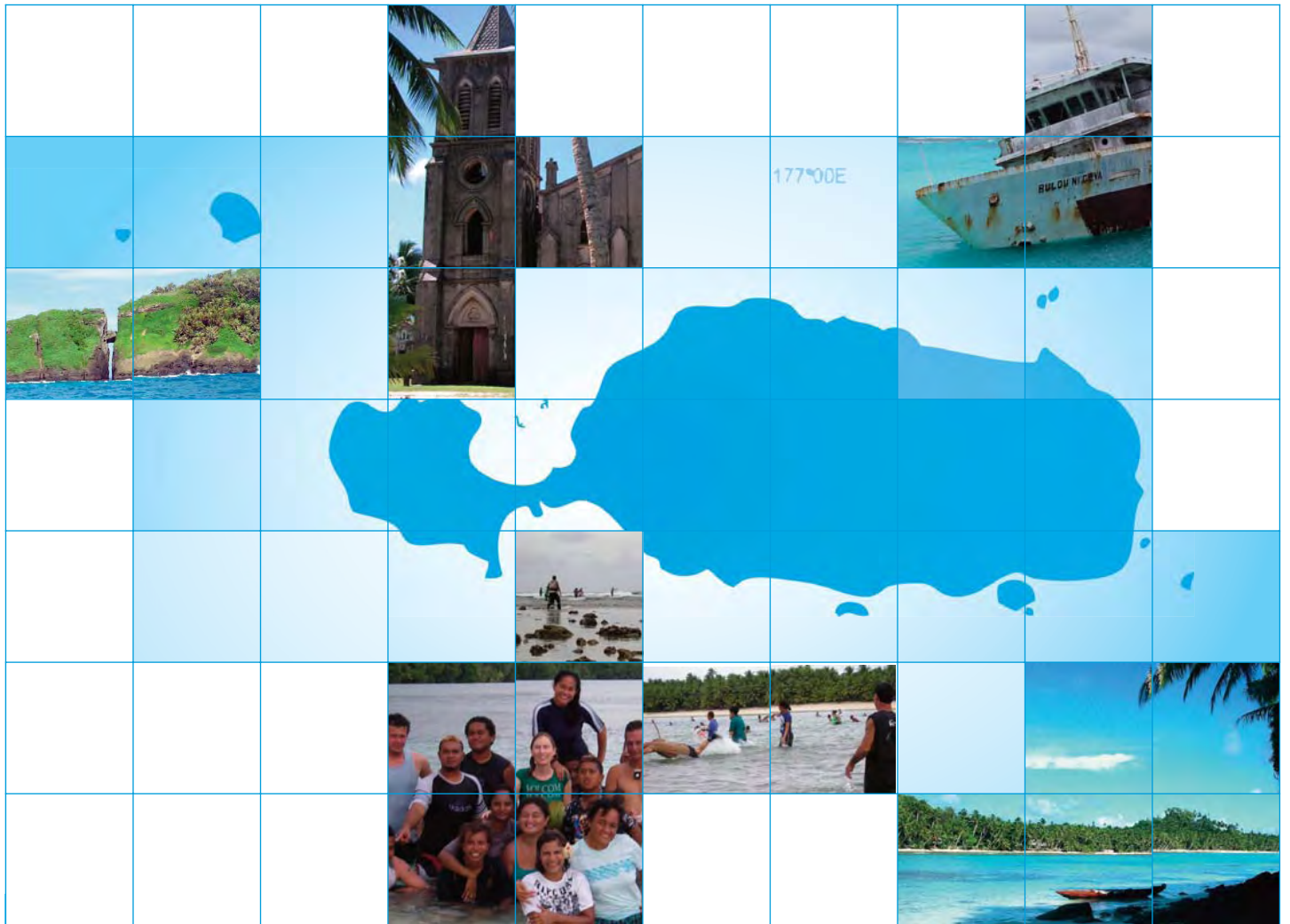
ANNUAL REPORT



MOBILISING OUR COMMUNITIES TO MANAGE ROTUMA'S NATURAL RESOURCES



Scenes around Rotuma



The LRI team would like to thank the following schools, communities and businesses who have assisted us throughout 2007:

Schools-Christ the King Mission, Malha'a District, Motusa District, Paptea District, Rotuma High School.

Villages- Pepjei, Motusa, Hapmak, Oinafa, Malha'a, Losa, Fapufa, Savlei, Juju.

Business- Maki's Shop, Sisters' Cooperative, Rotuma Post Shop, Hapmak Shop

Transportation- Raki & Hapmak trucks

Authorities- Council of Rotuma, Police, District Office, Health Inspector, Medical Officer & Rotuma Hospital staff.

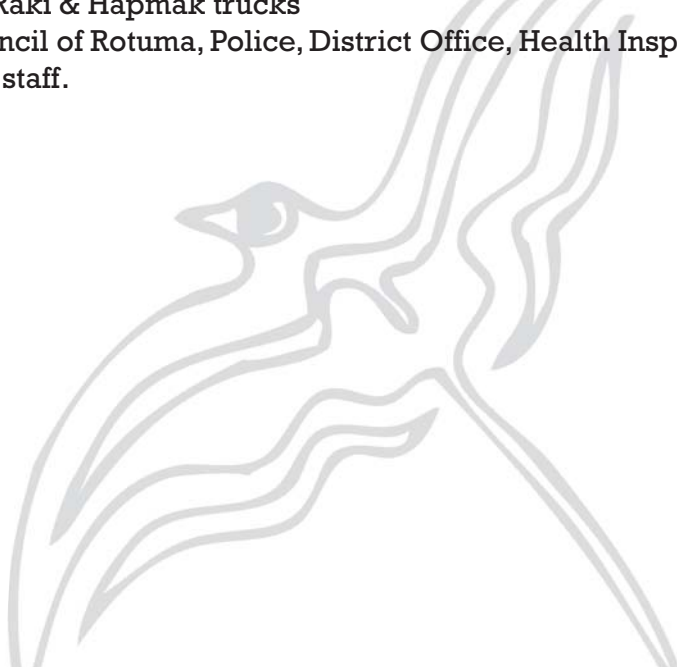


Table of Contents

I.	About Us: Vision & Mission	04
II.	Coordinator’s Notes	05
III.	Highlights of the year	06
IV.	Thematic area 1: ~ Building community resilience	07
V.	Thematic area 2: ~ Sustainable resource use and management	08
VI.	Thematic area 3: ~ Integrated Fisheries Management	09
VII.	Thematic area 4: ~ Creating a culture of biodiversity conservation	10
VIII.	Working in the community	11
IX.	Serving sponsors	12
X.	Financials	13
XI.	Team of volunteers/Address/website	14
		15
		16

I. LRI ~ About Us



LäjeRotuma Initiative (LRI) is a community-based environmental education and awareness development programme in Rotuma. LäjeRotuma is distinctive in its nature where young people share a vision and is part of a diverse network of communities on the island. Partners include the Council of Rotuma, government departments and ministries, donor agencies, institutions, conservation non-governmental organizations as well as professionals of varied backgrounds that range from energy, agriculture, business, environment, fisheries, and the PADI diving industry.



Vision

- Maximise the future environmental and sustainable development options for the island of Rotuma and her people.

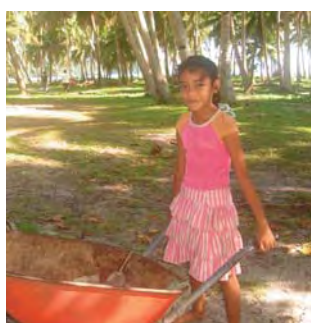
Mission

- Strengthen and mobilise the island community to manage and conserve their natural resources through training, research, demonstration and cultural exchange opportunities.



LäjeRotuma aims to:

- Strengthen natural resource management of the Rotuma community living on the island, for the benefit of current and future generation;
- Provide access to information for the island community as well as innovative activities and programs that encourage community and schools' participation on Rotuma;
- Encourage the creation of sustainable livelihood options for the improvement of living standards- education and awareness in matters of self-help;
- Further the development of youth, women, and all communities on Rotuma;
- Encourage the full participation of Rotuma individuals and communities living away from the home island in the Initiative's plans and actions.



II. Coordinator’s Notes

Our goal in this annual report is to highlight LäjeRotuma’s recent accomplishments and the opportunities that arose as a result of the commitment and hard work of the team of volunteers with the support of friends, family, partners and sponsors.

This past year, LäjeRotuma embarked on several efforts to raise its profile and achieve its mission to strengthen and mobilise the island community to manage and conserve their natural resources through training, research, demonstration and cultural exchange opportunities. In effect, LäjeRotuma expanded its island environmental community outreach to include engaging urban and trans-national Rotuman communities.

For the team, it has been a time of learning through trial and error as well as, embracing new ideas that are creative and innovative through research. For example the Rotuma Schools’ Adopt-a-habitat program, a pilot initiative launched in partnership with the four primary schools to create awareness via interactive learning of the different habitats found on the home island. Read more about the success story of the school program in a recently produced EcoCamp Report

We were also reminded that our work as change agents involves much more than simply communicating information. An important learning curve in LäjeRotuma’s journey is the efforts to register the Initiative as a Charitable Trust organisation.

For without guidance and support from our elders, family and friends, sponsors the goals set for the past year would not have been achieved. LäjeRotuma especially acknowledge our chiefs, the village communities, schools and the Council of Rotuma for its continued endorsement of our presence on the island.

Reflecting upon the past and how far we have come, it is with great hope that the next phase for LäjeRotuma will become even better. On behalf of the team of volunteers, I wish you all of our partners, friends and supporters, a great year for memorable experiences.

‘Omus lelea’ garue



Monifa Fiu



III. Highlights of the year

WHITLEY FUND FOR NATURE



2008 Whitley Award Application
Reviving a culture of biodiversity conservation: local knowledge and customary practices of Rotuma, Fiji Islands.



Rotuma Turtle Conservation Final Report

November 2006-July 2007

"Mobilizing community to manage well their natural resources"

This Project was undertaken with funding from the Australian Government Regional Natural Heritage Programme.

The views expressed herein are not necessarily the views of the Australian Government or the Australian Government does not accept responsibility for any errors or omissions.

RARE
inspiring conservation

Are you ready to bring your conservation message to your community with Rare's Pride Program?

WRECK REMOVAL: ROTUMA'S PERSPECTIVE

Other Partnerships:
Rotumans Association • Rotuma Website community
Ministry of Youth, Employment, Opportunities & Sports

Address: PO Box 10816 Lauterbach Street, Suva, Fiji
Tel: +677 332 2222 • Website: www.rotumalife.net

Rotuma Eco Camp 2007

Other Partnerships:
Rotumans Association • Rotuma Website community
Ministry of Youth, Employment, Opportunities & Sports

Address: PO Box 10816 Lauterbach Street, Suva, Fiji
Tel: +677 332 2222 • Website: www.rotumalife.net

FJI ROTUMA DAY CELEBRATIONS REPORT 2007

This report is made possible by financial contributions of the Vodafone Fiji Foundation to the LajeRotuma Initiative.

LajeRotuma acknowledge the support of the

Time: 11th -12th May 2007
Venue: Marist Brothers' High School



IV. Thematic Area 1: **Building community resilience**

Communities develop measures to minimize negative effects of climate change.

LäjeRotuma's strategy and action plan till 2010 is based on research and lessons learnt from communities with whom we have worked with on Rotuma. Focal activities are described under three interlinked thematic areas, of which community outreach, capacity building and research are major components that shapes LäjeRotuma's voluntary efforts.

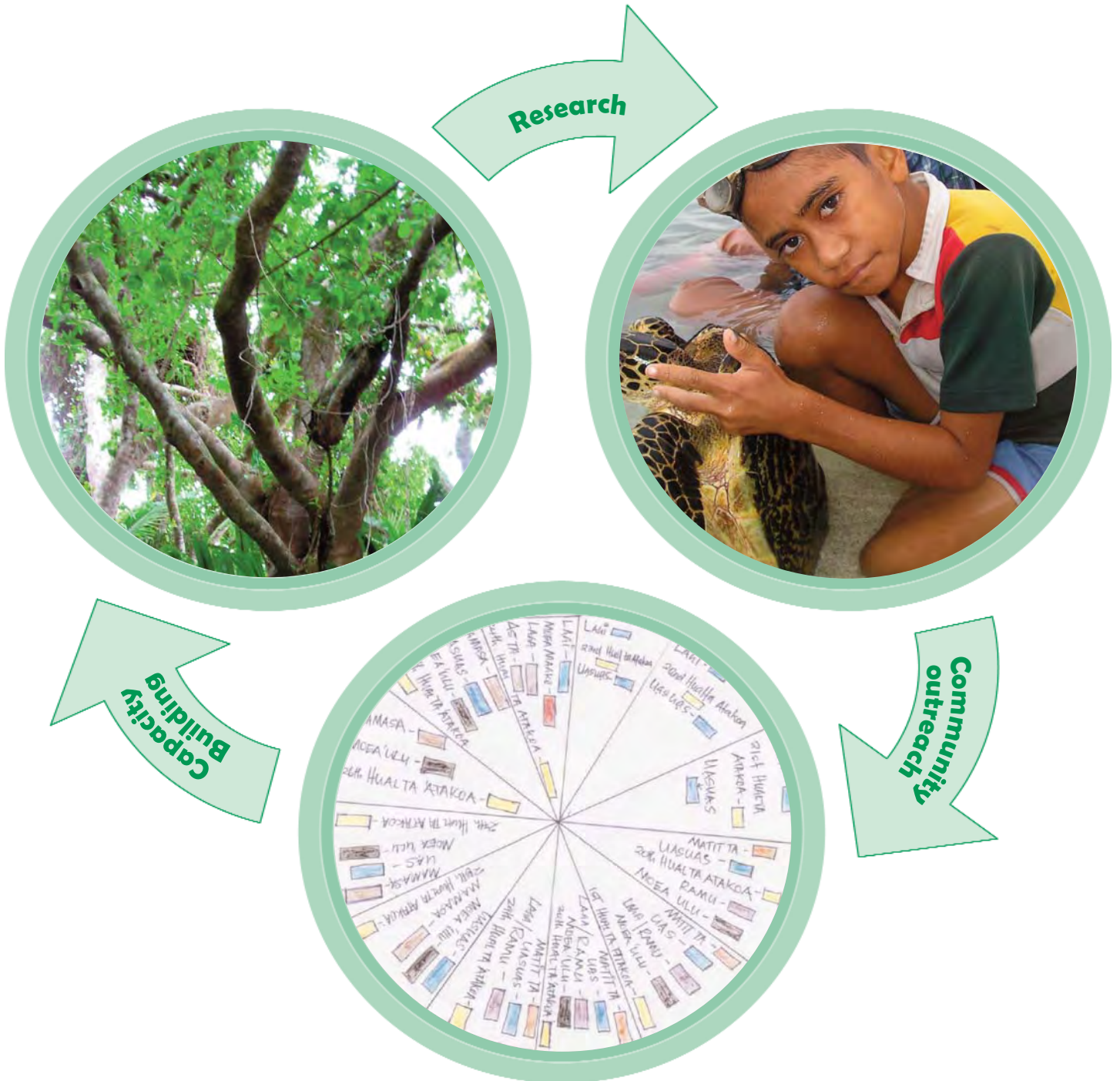


Achievements:

LRI conducted climate change awareness community workshops and schools outreach throughout the year. The first inaugural Schools EcoCamp (3 days) was organised and held at Oinafa Bay in December 2007.

V. Thematic Area 2: Sustainable resource use and management

Communities practice sustainable marine resource management and sustainable fishing methods and effectively manage threatened and culturally significant species.



Achievements: The production of Rotuma’s first Environmental Risk Assessment Scope Report in response to the increased interest in the utilization of the land for agriculture export to TUVĀLU market and the proposed port of entry at Rotuma. LajeRotuma is regarded as the environment adviser to the Council of Rotuma.

VI. Thematic Area 3: Integrated Fisheries Management

Best fishing practices particularly in addressing the irresponsible dumping of household rubbish along the shoreline. For the Malha'a, Oinafa, Hapmak, Pepjei, Motusa communities have acknowledged and is monitoring their shoreline littering as part of the community's action plan..



Achievements:

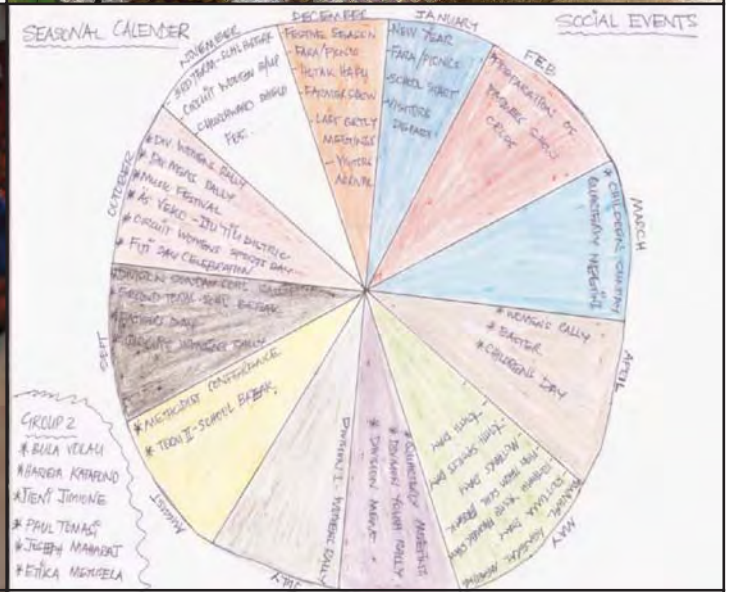
LRI is exploring the revival of the canoe making, an art only a few elders can remember.

VII. Thematic Area 4: *Creating a culture of biodiversity conservation.*

From awareness to action LājeRotuma in partnership with village groups are exploring the cultural biodiversity aspects and the risk of the island's natural biodiversity and its community, to adverse impacts of climate



VIII. Working in the community



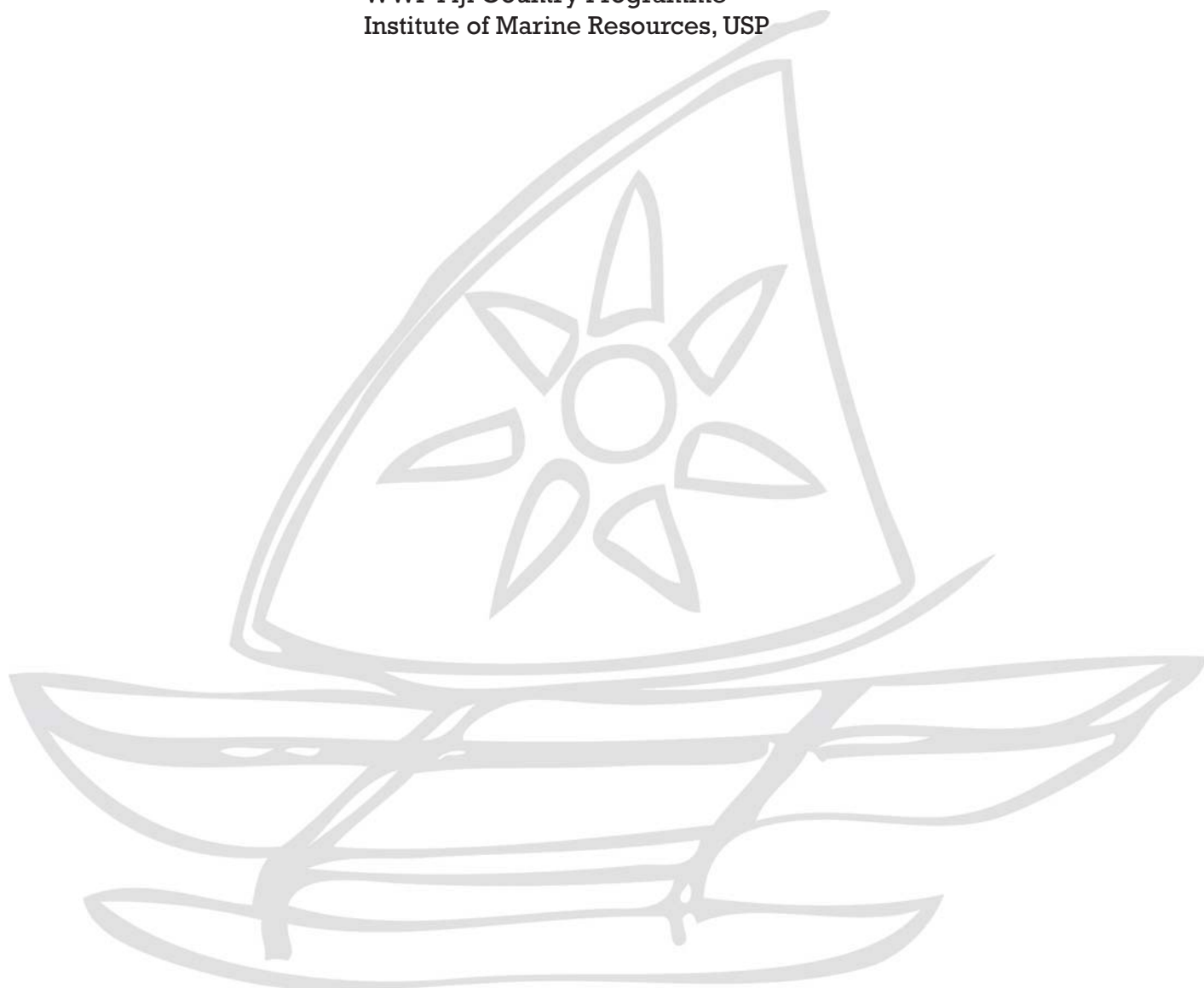
IX. Serving Sponsors

Our Sponsors

Vodafone Fiji Foundation
GEF Small Grants Programme co-funded by NZAID, Suva
Institute of Marine Resources- Regional Natural Heritage Programme
USP-Rotuman Students Association
Nadi Rotuman Community Association
Suva Itu'ti'u Rotuman Association
Alan Howard & Jen Rensel
Fiji Rotuma Association

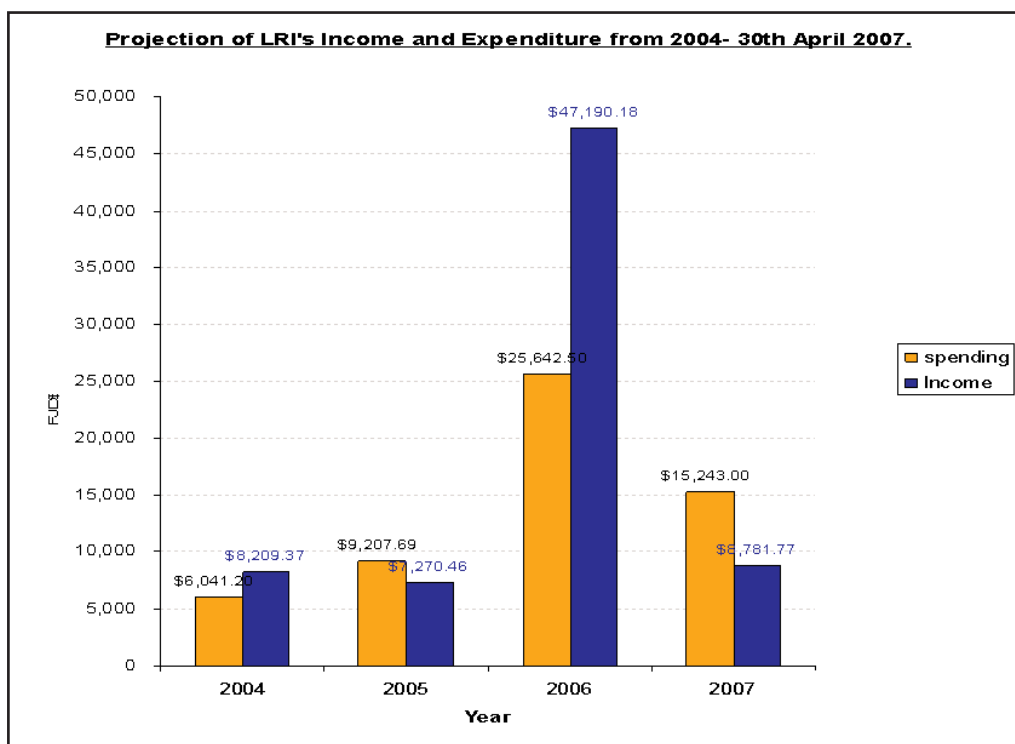
Our Partners

Live and Learn Environmental Education
Colgate Palmolive Fiji
WAC Theatre Unlimited
WWF Fiji Country Programme
Institute of Marine Resources, USP



IX. Financials

A review of LājeRotuma’s income and expenditure during a three-year period (from September 2004 until April 2007), the past year’s annual financials and a two year budget for which funds were secured for thus contributes to the implementation of the action plan.



Note:
Income bar for 2007 only reflects funding secured for 2007 and not inclusive of the balance carried forward from 2006 income bar.

Funds management/Administration.

Each disbursement of funds for each activity plan and island trip, a budget was prepared and reviewed by the core team members prior to acquiring signatures from two of the three trustees of the LRI bank account.

Upon completion of any project activity and return from field visit, a report and acquittal of spent funds was submitted for review by the Coordinator and tabled at core group meetings scheduled every four months annually.

Other Funding Applications

The Vodafone Fiji Foundation provided an estimated £9336 to LRI's environmental education awareness outreach program ending first quarter 2008. A recent funding secured from the GEF-Small Grants Programme constitutes to at least 38.6% of the total project funds needed for achievement of LRI's 2007-2010 Strategic Action Plan i.e. the implementation of a 2-year action plan until the first quarter of 2009.

Financials

The secured funding breakdown and budget for the period 2007 ~ 2009.

Line Item	Total Amount (FJD)	Amount Approved (GEF-SGP) (FJD)	Estimated Figure (GEF-SGP) (GBP)
<i>Estimated Exchange Rate</i>			3.191828918
Administration Costs			
Personnel	70,000	6000	1,880
Communications and Other Office Running Cost	15,000	5350	1,676
Consultancy	5,000	5000	1,567
Transportation to island	17660	7040	2,206
Direct Costs			
Community Workshops			
Fisheries * 7			
Workshop stationery	700	700	219
Workshop meals	7000	5000	1,567
Participants Travel	1400	700	219
Climate Witness Stories * 5			
Publication	5000	5000	1,567
Fish Craft Workshop			
Workshop stationery/items	1000	500	157
Participant transport	500	400	125
Participant meals	1800	900	282
School's Adopt-a-habitat Program			
Stationery/Items	600	600	188
Marine camp	8000	6000	1,880
Establishment of a resource centre	2000	2000	627
Collation of information of Targeted Fisheries SPP			
Transport	450	350	110
Publication	1500	1000	313
Translation	1000	500	157
Biodiversity Surveys			
Equipment	2200	2000	627
Transport hire	500	400	125
Divers fees	5000	3600	1,128
Coastal rehabilitation			
Coordination @\$100/monthx 12 months		1200	376
Field allowances @\$50/px10px2	1000	500	157
Island transportation	200	100	31
Inter-island transportation @\$240 return/px2p	480	480	150
Materials/Tools/seedlings	500	500	157
Reporting & Graphics @\$300	300	200	63
Food/Refreshment @\$200/monthx6 months	1200	800	251
Sea grass and Turtle workshops			
Coordination @\$200/monthx 6 monthsx2	2400	1200	376
Resource persons @\$200/reviewx4	800	400	125
Island transportation	200	100	31
Inter-island transportation @\$240 return/px2p	480	480	150
Reporting & Graphics @\$300	300	200	63
Materials	300	300	94
Food/Refreshment @\$200/meetingx1+monitoring/yrx3yrs	800	500	157
TOTAL BUDGET FOR AMOUNT REQUESTED	\$155,270	\$60,000	£18,798.00

In the spirit of volunteerism



Jacob Itautoka



Ritia Atalifo & Family



Gagaj Tomanav



Marie Pene



Vama & Akata



Nataniela

In the spirit of volunteerism



Teri & William



Master Fanefau



Paul, Graig & Alfred



Safu & Paul



Pelu Fatiaki



Kath, Ash & Ru



... from Motusa



Mr & Mrs Ralifo



Christ The King



Motusa District School



Malha'a District School



Paptea District School



LājeRotuma Initiative

PO Box 10816, Laucala Beach Estate, Suva, Fiji
E-mail: lajerotuma@unwired.com.fj
Website: www.rotuma.net